

USE AND MAINTENANCE MANUAL

BRUSHLESS AIR COMPRESSORS

DC 100/05
Volt 20 BATTERY
Volt 230/50

CODE
813903001

AC 200/05
Volt 230/50/1

CODE
814003001



TABLE OF CONTENTS

INTRODUCTION AND GENERAL WARNINGS	4
IMPORTANT INFORMATION	4
MEANINGS OF SIGNAL WORDS.....	4
PARTS LIST	5
CE MARKING	6
CE DECLARATION OF CONFORMITY.....	7
TECHNICAL DATA	8
IMPORTANCE OF THE MANUAL	8
RECIPIENTS	8
MACHINE STATUS AND OPERATION.....	9
AC/DC POWER SUPPLY SHIFTING - MOD. DC100/05	10
COMMON FAILURE CODE - MOD. DC100/05.....	10
WARRANTY	11
RIGHTS RESERVED.....	11
INTENDED USE.....	11
REASONABLY FORESEEABLE INCORRECT USE	12
TRANSPORT AND HANDLING OF THE APPLIANCE	12
STORAGE.....	13
ELECTRICAL CONNECTION	13
AIR PIPE (EXTENSION) AND TOOLS CONNECTION	14
SAFETY DEVICES ADOPTED	14
SAFETY SIGNS.....	15
PERSONAL PROTECTIVE EQUIPMENT (PPE)	15
RESIDUAL RISKS	16
AREAS ASSUMED BY AUTHORISED OPERATORS.....	16
PRE-START-UP CHECKS	17
APPLIANCE ACTIVATION.....	17
ALARM CODES.....	18
EMERGENCY STOP.....	18
STANDARD MAINTENANCE.....	18
EXTRAORDINARY MAINTENANCE	19
SPARE PARTS	20
ANOMALIES - CAUSES - SOLUTIONS.....	20
END OF SERVICE LIFE.....	21
SPARE PARTS (TABLES AND LISTS)	22

INTRODUCTION AND GENERAL WARNINGS

THIS MANUAL IS DRAWN UP IN TWO LANGUAGES (ITALIAN/ENGLISH):
ENGLISH IS THE TRANSLATION OF THE ORIGINAL INSTRUCTIONS.
THE MANUALS IN DIFFERENT LANGUAGES ARE AVAILABLE IN THE SUPPORT AREA OF THE WEBSITE:
www.gentilincompressors.com

The **INSTRUCTION MANUAL** is integral part of the compressor.
Use and read the manual with care being careful not to damage any part of it. In case of loss or deterioration of the manual, request a copy to the manufacturer, by giving the document identification data: Code, issue and revision date.
Ensure that any up-dates forwarded by the Manufacturer are actually added to the manual.
If the compressor is sold on at a later date the manual must be given to the new owner.

IMPORTANT INFORMATION

Read and understand all of the operating instructions, safety precautions and warnings in the Instruction Manual before operating or maintaining this compressor.
Most accidents that result from compressor operation and maintenance are caused by the failure to observe basic safety rules or precautions. An accident can often be avoided by recognizing a potentially hazardous situation before it occurs, and by observing appropriate safety procedures.
Basic safety precautions are outlined in the “**SAFETY**” section of this Instruction Manual and in the sections which contain the operation and maintenance instructions.
Hazards that must be avoided to prevent bodily injury or machine damage are identified by “**WARNINGS**” on the compressor and in this Instruction Manual.
Never use this compressor in a manner that has not been specifically recommended by manufacturer, unless you first confirm that the planned use will be safe for you and others.

MEANINGS OF SIGNAL WORDS

WARNING: This points out a potentially hazardous situation, which if ignored, could cause personal injury and machine damage.

NOTE: This enhances crucial information.



WARNING:
Please read understand this manual before operating the compressor.



READ THE INSTRUCTION MANUAL:
Read the use and maintenance manual carefully before installing and starting the compressor.



RISK OF ELECTRIC SHOCK:
The electrical power supply of the compressor must be disconnected before doing any jobs on the compressor.



RISK OF HIGH TEMPERATURES:
Be careful when touching the compressor as some parts of it could be very hot.



RISK OF ACCIDENTAL START-UP:
The compressor could start automatically in case of a black-out and subsequent reset.

PARTS LIST

AC 200/05
Volt 230/50/1

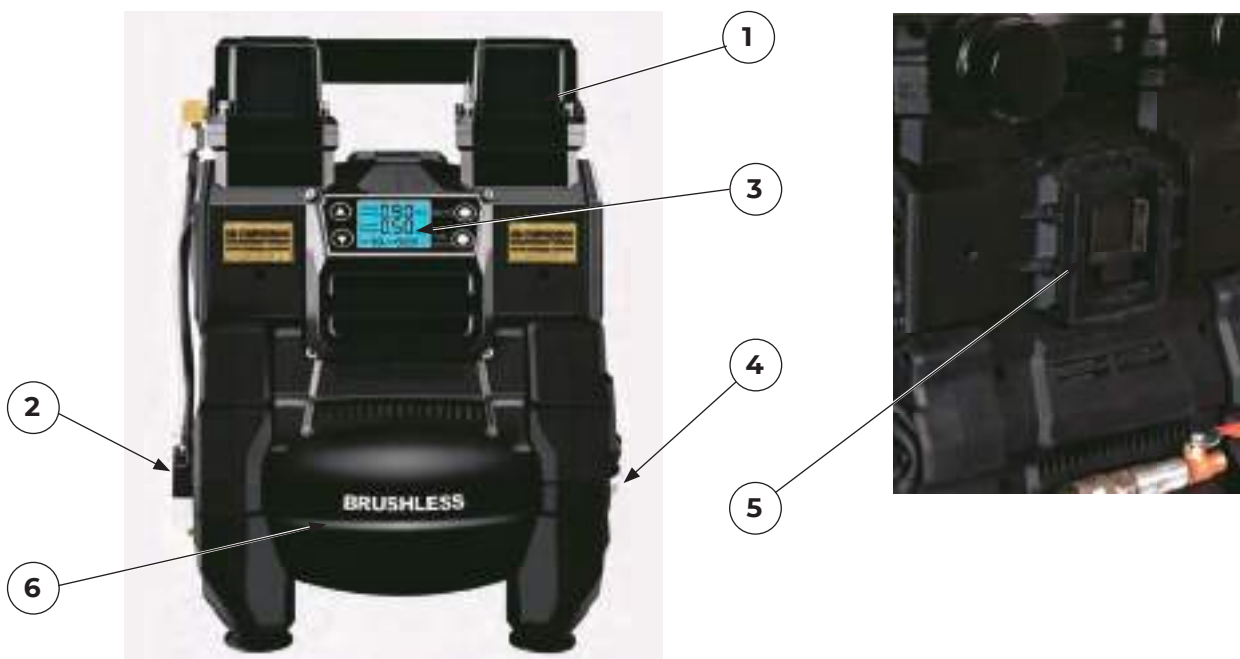
- 1** Handle
- 2** Filter
- 3** Solenoid valve
- 4** LCD control panel
- 5** Pressure sensor
- 6** Tank



1

DC 100/05
Volt 20 BATTERY
Volt 230/50/1

- 1** Filter
- 2** Solenoid valve
- 3** LCD control panel
- 4** Pressure sensor
- 5** Battery 20 V plug
- 6** Tank



2

WARNING:

The images and product descriptions are current at the time this manual was created.

With the aim to continuously improve the product, our Company reserves the right to make improvements without duty to provide the user with further information on any changes.

CE MARKING

The CE label serves as evidence of the appliance's compliance with essential health and safety requirements as specified by the **Machinery Directive 2006/42/CE**. It takes the form of a polyester sticker, with a black thermal transfer print, and it is placed on the front of the machine next to the control panel.

		GENTILIN SRL Via della Spina, 43201 24070 Trespolo (BG) ITALY Tel. +39 0445 950000 Fax +39 0445 951412	
TIPO / MODELLO TYPE / MODEL			
ANNO / YEAR N° DI SERIE / SERIAL N°		*****	
St.			
PRESSIONE MAX. ESERCIZIO MAX. WORKING PRESSURE		10 bar	
TENSIONE TENSION	 V / Hz / A	
VEL. ROTAZIONE ALBERO SHAFT ROTATION SPEED	 rpm	
POTENZA NOM. RATED POWER	 kW	
PESO WEIGHT		kg	
			



MADE IN PRC

CE DECLARATION OF CONFORMITY

Gentilin S.r.l. - Via delle Tezze, 20/22 36070 Trissino (VI) - Italy - VAT No: **01262520248**

Declares that the following machines:

COMPRESSORS AC 200/05 V220/50 & DC 100/05 V20 - V220/50

MACHINE: **Air volumetric compressor**

SERIAL NUMBER : _____

Comply with the following directives:

- **2006/42/EC** Directive of the European Parliament and the Council of 17 May 2006 on machinery and amending Directive 95/16/EC (recast)
- **2014/30/UE** Directive of the European Parliament and of the Council of 26 February 2014, replacing 2004/108/EC Directive of the European Parliament and of the Council of 15 December 2004, on the approximation of the laws of the Member States relating to electromagnetic compatibility and repealing Directive 89/336/CEE 97/23/CE (Art. 3.3)
- **2014/35/UE** Directive of the European Parliament and of the Council of 26 February 2014, replacing Directive 2006/95/EC of the European Parliament and Council, of December 12, 2006
- Directive **2000/14/EC** of the European Parliament and the Council of 8 May 2000 and subsequent additions.

Person authorized to prepare the Technical Dossier **Gentilin Giuseppe**, in quality of Technical Manager.

ECM, notified Entity nr. 1282: ENTE CERTIFICAZIONE MACCHINE SRL

Via Cà Bella 243/1 – loc. Castello di Serravalle - 40053 Valsamoggia (BO) - Country: ITALY

Noise directive 2000/14/CE, Def. 9, Attachment I, Attachment Procedure VI (D.Lgs. 262/2002)

Acoustic power level measured 94 dB(A)

Acoustic power level guaranteed 97 dB(A)

Place: **Via delle Tezze, 20/22 - 36070 Trissino (VI) ITALY**

Date: _____

Legal Representative

(Gentilin Giampaolo)

Signature:



Stamp:



TECHNICAL DATA

MODELS		AC 200/05	DC 100/05
Pressure	bar	3-9	3-9
Air delivered at 5 bar	l/min / cfm	115	55
Power delivered	kW/HP	0.9	0.5
Voltage	V	180/250	CC 18-24 CA 230
Sizes	cm	31x25x39	31x25x43
Weight	Kg	9.5	10.5

IMPORTANCE OF THE MANUAL

THIS SECTION CONTAINS IMPORTANT SAFETY INSTRUCTIONS FOR USE OF THE COMPRESSOR.



BEFORE USING THE MACHINE IN QUESTION, THE AUTHORIZED OPERATORS ARE OBLIGED TO READ AND THOROUGHLY UNDERSTAND THIS MANUAL IN ALL ITS PARTS.

The "Instruction Manual" was compiled according to the instructions as specified in Machinery Directive 2006/42/CE, in order to guarantee easy and correct understanding of subjects relevant to operators authorised to use and oversee maintenance of the appliance in question. Should operators find errors, please do not send incorrect personal interpretations/amendments that may threaten safety, rather, we advise you immediately request the Manufacturer send the correct explanations or further details.

The "Instruction Manual" must be accessible by authorised operators at all times and must be always be kept in a safe place within close proximity of the appliance.



THE PRESENT INSTRUCTION MANUAL FORMS AN INTEGRAL PART OF THE APPLIANCE AND MUST BE KEPT FOR FUTURE REFERENCE AND UP UNTIL THE END OF APPLIANCE LIFE. IT MUST ALWAYS BE ACCESSIBLE TO AUTHORISED OPERATORS AND IT MUST BE SAFELY STORED AND KEPT WITHIN CLOSE PROXIMITY OF THE APPLIANCE ITSELF.

THE MANUFACTURER DECLINES ANY RESPONSIBILITY FOR DAMAGE TO PERSONS, ANIMALS AND OBJECTS CAUSED BY INOBSERVATION OF REGULATIONS AND WARNINGS DESCRIBED IN THE PRESENT INSTRUCTION MANUAL.

IN THE INSTANCE WHERE THE INSTRUCTION MANUAL IS LOST OR DAMAGED, REQUEST A COPY FROM THE MANUFACTURER OR THE AUTHORISED SUPPLIER, SPECIFYING THE APPLIANCE MODEL AND THE EDITION NUMBER PROVIDED WITHIN THE TITLE.

THE PRESENT INSTRUCTION MANUAL COMPLIES WITH TECHNICAL PROVISIONS AT THE TIME OF PURCHASE OF THE APPLIANCE AND CANNOT BE CONSIDERED INCORRECT IN THE INSTANCE WHERE NEW EXPERIMENTATION RESULTS IN UPDATES OF SUCH TECHNICAL PROVISION.

THE PRESENT INSTRUCTION MANUAL MUST BE PASSED OVER IN THE INSTANCE WHERE THE APPLIANCE IS HANDED OVER TO ANOTHER USER.

RECIPIENTS

This "Instruction Manual" is aimed exclusively at operators authorised to carry out operations according to specific technical skills necessitated for the operation type.

The below described symbols appear at the beginning of paragraphs in order to indicate the identity of operators affected by the subject described.



AUTHORISED OPERATORS MUST ONLY CARRY OUT OPERATIONS FOR WHICH THEY ARE QUALIFIED.



BEFORE CARRYING OUT ANY OPERATIONS, AUTHORISED OPERATORS MUST HAVE ADEQUATE PSYCHO-PHYSICAL CAPABILITIES IN ORDER TO ALWAYS ENSURE SAFETY.



ASSIGNED OPERATOR: An operator over the age of 18 (private user or employee) and, who, in compliance with current legislation on health and safety in the work place in force within the country of usage, is capable of exclusively activating, using and deactivating the appliance whilst completely complying with the instructions presently provided, whilst using the dedicated personal safety device items.



MECHANICAL/PNEUMATIC MAINTENANCE PERSON: A qualified technician, capable of carrying out exclusive interventions on mechanical/pneumatic parts in order to oversee the regulation, maintenance and/or repairs even with protective devices disabled in complete compliance with the instructions presently provided or with any other specific document supplied by the Manufacturer, whilst using the dedicated personal safety device items.



ELECTRICAL MAINTENANCE: A qualified technician, capable of carrying out exclusive interventions on electrical devices in order to oversee the regulation, maintenance and/or repairs even where an electric supply is present and even with protective devices disabled in complete compliance with the instructions presently provided or with any other specific document supplied by the Manufacturer, whilst using the dedicated personal safety device items.



COMPANY SAFETY MANAGER: A qualified technician nominated by the employer (where the appliance is used in a business context), who possesses the required professional, technical skills as specified by the legislations currently in force on health and safety of workers at the work place.



MANUFACTURER'S TECHNICIAN: A qualified technician offered by the Manufacturer and/or Supplier authorised to provide required technical assistance, standard and extraordinary maintenance interventions and/or operations which are not presently included which necessitate specialist knowledge of the appliance, whilst using the dedicated personal safety device items.

MACHINE STATUS AND OPERATION

LCD CONTROL PANEL

- By means of the left buttons “▲” (1) and “▼” (2) the pressure setting may be adjusted. Every time they are pressed, the pressure value changes of 5 bar. If the setting pressure is 9 bar, when the pressure is lower than 7 bar. The machine will start at once.
- The On/Off button (3) allows stop and start of the machine.
- The button Fast/Silence (4) is used to adjust the running speed. High speed (*Fast*) is 3000 r.p.m.. The slow speed (*Silence*) is 1500 r.p.m..
In “*Fast*” mode the speed is 99% (Fig. 4), in “*Silence*” mode, the operation speed is of 50% (Fig. 4).
- Pressure setting range: 3-9 bar.
- Press the On/Off button to stop the machine, if not in use.



99% = Fast



50% = Silence

4

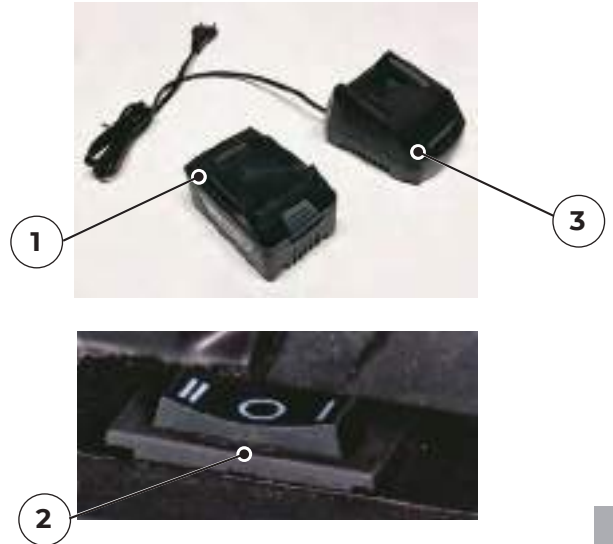
AC/DC POWER SUPPLY SHIFTING - MOD. DC100/05

This machine is a AC/DC double use air compressor: the battery wrap (**1 - Fig. 5**) and AC power supply may both supply power to the machine. You may shift the supply mode through the double open switch (**2 - Fig. 5**): on "0" position you cut off power, pressing on "I" you select power supply by the battery wrap and if "II" is pressed, the machine runs through AC power supply.

WARNING!



The battery wrap and the AC power supply are separate and independent power supply modes: **DO NOT charge the battery while the AC power supply is on.** The battery wrap should be charged by means of the charger for independent charging (**3 - Fig. 5**).



5

COMMON FAILURE CODE - MOD. DC100/05

Will occur failure code at the liquid cristal screen set pressure value position when machine abnormal stop machine (**Fig. 6**):

E01 -----> Voltage lower than 16 V

The machine can't start when voltage of battery wrap is lower than 16V, charging is needed.

E16 -----> Drive plate power module over heat protection (it will occur when machine continues working long time). During the protection period, the machine doesn't start, operation will be automatically restored when the temperature will fall within the factory setting values.



6

WARRANTY

- 1) **WARRANTY DECLARATION:** the Manufacturer guarantees the Acquirer, the replacement, repair and intervention relative to all appliances, where the aforementioned display conformity defects which comprise correct usage and operation, only where such defects are owing to the fault of the Manufacturer. The Manufacturer reserves the right to adopt the best solution in order to restore appliance conformity within a reasonable amount of time.
- 2) **ACQUIRER:** the Acquirer is defined as a “consumer” where the purchase was made by a physical person and where the appliance is not to be used for commercial or professional purposes. The Acquirer is defined as a “professional or company” where the purchase was made by a professional or company who aims to use the appliance for commercial or professional purposes.
- 3) **TERMS:** the Manufacturer is responsible where the defect of conformity is discovered within the following time frame from the purchase date:
 24 months where the purchase was made by a “consumer” as described under point 2).
 12 months where the purchase was made by a “professional or company” as described under point 2).
 36 mois: voir les conditions d’extension de la garantie du constructeur dans le livret d’accompagnement.
- 4) **VALIDITY:** the warranty is valid if the buyer notifies the manufacturer of any lack of conformity within 2 months from the date on which the lack was detected. The above mentioned notification must necessarily be accompanied by a regular proof of purchase (till receipt or invoice).
- 5) **EXPIRY:** the warranty expires in the instance where the Acquirer uses the appliance in an inappropriate and/or in such a way that goes against the details in the “Instruction Manual” supplied by the Manufacturer, or in the instance where the defect is owing to the inexperience of the Acquirer or an accident.
- 6) **RESPONSIBILITY:** the Manufacturer is exempt from all responsibility from harm caused to the Acquirer in terms of lack of or reduced performance owing to conformity defects.
- 7) **FEES:** the fees relative to the work force and materials necessary to restore the appliance are charged to the Manufacturer. The fees and delivery methods are to be agreed upon with the Authorised Supplier.

RIGHTS RESERVED

Rights reserved with regards the “Instruction Manual” remain with the Manufacturer.

No parts of the present manual, in full or in part, may be copied and/or passed on in any way, without written authorisation from the Manufacturer.

All the brands mentioned belong to the respective owners.

INTENDED USE

FIELD OF OPERATION

Industrial, handicraft and civil.

PLACE OF OPERATION

Interior locations with sufficient lighting, ventilation, with room air temperature from +5 to +40°C, in compliance with legislation governing health and safety in the work place in force in the country of usage. The appliance must rest on a surface that ensures the appliance is stable with respect to its weight and overall dimensions (see chap. “TECHNICAL DATA”).



WARNING!

THE APPLIANCE MUST BE KEPT OUT OF REACH OF CHILDREN.

INTENDED USE

Compressing air (oil-less) to be used with suitable pneumatic tools according to current legislation in force (E.g. blowing, pumping, painting, etc.).

OPERATORS AUTHORISED USE

An authorised operator with professional, technical skills as described in Chap. “RECIPIENTS”.

REASONABLY FORESEEABLE INCORRECT USE

The appliance was designed and manufactured exclusively for the aim as described in Chap. "INTENDED USE"; in order to ensure the safety of authorised operators and appliance efficiency at all times, any other use is completely forbidden.

IT IS COMPLETELY FORBIDDEN TO OPERATE THE APPLIANCE IN ENVIRONMENTS PRONE TO EXPLOSIONS AND/OR WHERE COMBUSTIBLE SUBSTANCES ARE PRESENT (E.G. WOOD GRAINS, FLOUR, SUGAR AND GRANULES).

IT IS ABSOLUTELY FORBIDDEN TO USE THE MACHINE IN AREAS CONTAINING SOLID OR ABRASIVE PARTICLES.

DANGER OF BURNS UPON ACCIDENTAL CONTACT WITH TWIN CYCLINDER PUMP SYSTEM AND ELECTRIC MOTOR.

WARNING – RESIDUAL RISK (see Chap. "RESIDUAL RISKS").

THE MACHINE MUST BE USED IN COMPLIANCE WITH LEGISLATION GOVERNING EMISSIONS (NOISE) IN FORCE IN THE COUNTRY OF USE.

DURING USE, ENSURE THAT UNAUTHORISED PERSONS DO NOT COME WITHIN PROXIMITY OF THE APPLIANCE.

THE APPLIANCE MUST BE KEPT OUT OF THE REACH OF CHILDREN.

IT IS STRICTLY FORBIDDEN TO USE THE MACHINE OUTDOORS.

INCORRECT USE OF THE APPLIANCE OR USE WHICH DIFFERS FROM THAT SPECIFIED IN Chap. "INTENDED USE" IS FORBIDDEN.

THE USE OF UNSUITABLE AIR PIPES (EXTENSIONS), CONNECTIONS AND TOOLS OR THOSE WHICH DO NOT CONFORM WITH CURRENT LEGISLATION IN FORCE ARE COMPLETELY FORBIDDEN.

IT IS FORBIDDEN TO LIFT THE APPLIANCE WITH CRANES AND/OR LIFTING DEVICES.

IT IS FORBIDDEN TO DIRECT COMPRESSED AIR JETS AT PERSONS AND/OR ANIMALS.

IT IS FORBIDDEN TO USE THE APPLIANCE TO MOVE AND/OR LIFT PERSONS, ANIMALS OR OBJECTS.

IT IS FORBIDDEN TO MOUNT THE APPLIANCE.

IT IS FORBIDDEN TO TOW THE APPLIANCE USING ANY TYPE OF MEDIUM AND/OR VEHICLE.

IT IS FORBIDDEN TO MANUALLY MOVE THE APPLIANCE UPHILL AND/OR DOWNHILL WHERE DANGEROUS INCLINATIONS ARE PRESENT.



TRANSPORT AND HANDLING OF THE APPLIANCE



A



B



C

- A)** Once unpacked the compressor, pull up the stopper.
- B)** Install the two suction filters and screw them.
- C)** Connect the air tools you need to use, then start the machine.

EFFICIENCY AND USE SCOPE

Max. loading power could drive:

Woodworking pneumatic nailer, tyre air charging, dust pneumatical cleaning, pneumatic screwdriver, for Hobby intended use.

MAINTENANCE



WARNING:

BEFORE ANY MAINTENANCE / SERVICE OPERATION, THE COMPRESSOR MUST BE SWITCHED OFF AND THE AIR ENTIRELY EXHAUSTED, OTHERWISE THERE IS RISKS OF DAMAGE TO PERSONS AND THINGS.

- 1) Keep the machine clean and carry out termly maintenance.
- 2) The safety valve regularly check: if faulty or damaged, contact a service center for its replacement.
- 3) Clean the silencer filter every 500 working hours. The LCD panel shows the working time.

STORAGE

In the instance where the appliance is not to be used for an extended period of time, it must be stored in a safe place, with suitable temperature and air humidity values, where it is protected from dust.

Before storing the appliance, we recommend draining moisture from the air tank.

ELECTRICAL CONNECTION

The machine can be connected to the mains electrical supply by plugging the power cable **(A - Fig. 8)** into the proper socket.



THE POWER SUPPLY NETWORK TO WHICH THE APPLIANCE IS CONNECTED MUST CONFORM TO THE LEGISLATION CURRENTLY IN FORCE IN THE COUNTRY OF USAGE, CONFORM TO THE TECHNICAL SPECIFICATIONS PROVIDED IN CHAP. "TECHNICAL DATA" AND BE EQUIPPED WITH A SUITABLE "PLANT EARTHING" SYSTEM.

ALL MATERIALS USED FOR ELECTRICAL CONNECTION MUST BE SUITED TO THE INTENDED USAGE, LABELLED WITH "CE" IF SUBJECT TO THE LOW VOLTAGE DIRECTIVE 2006/95/CE AND CONFORM TO THE REQUIREMENTS AS SPECIFIED IN THE LEGISLATION CURRENTLY IN FORCE IN THE COUNTRY OF APPLIANCE USAGE.



DISREGARD FOR THE ABOVE DESCRIBED WARNINGS MAY LEAD TO IRREPERABLE DAMAGE TO THE APPLIANCE ELECTRICAL SYSTEM AND SUBSEQUENTLY WARRANTY EXPIRY.

THE MANUFACTURER DECLINES ANY RESPONSIBILITY FOR FAULTS OR ANOMOLIES WITH APPLIANCE OPERATION CAUSED BY ELECTRICAL POWER SURGES IN ADDITION TO TOLERANCES BY THE SUPPLY ENTITY (VOLTAGE $\pm 10\%$, FREQUENCY $\pm 2\%$).

IT IS COMPLETELY FORBIDDEN TO OPERATE THE APPLIANCE IN ENVIRONMENTS PRONE TO EXPLOSIONS AND/OR WHERE COMBUSTIBLE SUBSTANCES ARE PRESENT (E.G. WOOD GRAINS, FLOUR, SUGAR AND GRANULES).

WHERE NECESSARY, CONNECT THE APPLIANCE EXCLUSIVELY TO THE ELECTRICAL SUPPLY GENERATOR WITH POWER GRTEATER THAN THE INSTALLED ELECTRICAL POWER (SEE CHAP. "TECHNICAL DATA"), IN ORDER TO SUPPORT THE POWER-DRAW AT START-UP.

AIR PIPE (EXTENSION) AND TOOLS CONNECTION

- 1) Connect the tool to the air pipe (extension).
- 2) Connect the air pipe (extension) to the appliance air outlet quick coupling (**A - Fig. 9**).

THE MANUFACTURER DECLINES ANY RESPONSIBILITY FOR DAMAGE TO PERSONS, ANIMALS AND OBJECTS CAUSED BY THE INOBSERVATION OF THE ABOVE DESCRIBED WARNINGS.



AIR PIPES (EXTENSION), CONNECTIONS AND TOOLS WHICH CONFORM TO THE MANUFACTURER'S INSTRUCTION MANUALS MUST BE USED.

THE USE OF UNSUITABLE AIR PIPES (EXTENSIONS), CONNECTIONS AND TOOLS AND/OR THOSE WHICH DO NOT COMPLY WITH LEGISLATION CURRENTLY IN FORCE IS STRICTLY FORBIDDEN.



9

SAFETY DEVICES ADOPTED

SAFETY VALVE (Fig. 10): a certified safety valve (set to 10.5 bar), installed to the pneumatic system, under the pressure switch. It tackles over-pressure in the instance where, owing to anomalies, the pressure switch does not function. Safety valve intervention ensures the operator switches off the appliance and requests the support of maintenance persons.

PRESSURE SWITCH (Fig. 11): an electro-pneumatic device (set to a minimum of 7 bar and a maximum of 10 bar - setting can be changed by PCB) installed to the pneumatic system. It is used to control the automatic start-up of the appliance when the operating pressure comes down to 7 bar and the automatic close-down when the pressure reaches 10 bar. The minimum and maximum pressure setting is adjustable.

FIXED COOLING FAN PROTECTIVE NET (Fig. 12): fixed protection made of plastic attached using screws fixed to the twin cylinder pump system base. It serves to stop accidental contact with the cooling fan when in motion.



10



11



12



ALL SAFETY DEVICES INSTALLED ON THE APPLIANCE MUST BE REGULARLY CHECKED TO ENSURE THEY ARE FUNCTIONING CORRECTLY. ANY SAFETY DEVICES WHICH ARE NOT FUNCTIONING CORRECTLY OR WHICH ARE DAMAGED MUST BE IMMEDIATELY REPLACED. THE HANDLING, EXCLUSION AND/OR REMOVAL OF SAFETY DEVICES INSTALLED ON THE DEVICE IS STRICTLY FORBIDDEN. REPLACING A SAFETY DEVICE OR COMPONENTS OF SAFETY DEVICES WITH UNORIGINAL REPLACEMENT PARTS IS STRICTLY FORBIDDEN.

SAFETY SIGNS

Safety signs used are illustrated on a sticky label, applied outside the appliance.

SIGN DEFINITIONS:

- ① Warning – electrical power.
- ② Warning – automatic start-up.
- ③ Warning – high temperature.
- ④ Instructions must be read.
- ⑤ Power must be disconnected.
- ⑥ Protect your hearing.
- ⑦ Guaranteed acoustic power level.



①



②



③



④



⑤



⑥



⑦

13






THE SAFETY SIGN MUST BE KEPT CLEAN SO THAT IT IS VISIBLE. SAFETY SIGNS WHICH ARE DAMAGED MUST BE REPLACED; ASK FOR A REPLACEMENT FROM THE MANUFACTURER OR THE AUTHORISED SUPPLIER. REMOVING AND/OR DAMAGING THE SAFETY SIGN ATTACHED TO THE APPLIANCE IS STRICTLY FORBIDDEN.

PERSONAL PROTECTIVE EQUIPMENT (PPE)



PERSONAL PROTECTIVE EQUIPMENT ISSUED BY THE MANUFACTURER MUST BE USED. AUTHORISED OPERATORS MUST WEAR PERSONAL PROTECTIVE EQUIPMENT ISSUED BY THE MANUFACTURERS OF THE TOOLS EMPLOYED BASED UPON THE WORK TO BE CARRIED OUT. AUTHORISED OPERATORS MUST NOT WEAR CLOTHING AND/OR ACCESSORIES THAT MAY BECOME CAUGHT IN THE APPLIANCE.

SIGN	COMPULSORY PPE	TYPE OF WORK
	Hand protection (heat-resistant gloves)	In the instance where maintenance interventions have to be carried out whilst the electric motor and the twin cylinder pump system are still hot.
	Ear protectors (earmuffs)	During all operational phases.
	Feet protection (shoes with reinforced toe caps)	During appliance transportation.

RESIDUAL RISKS

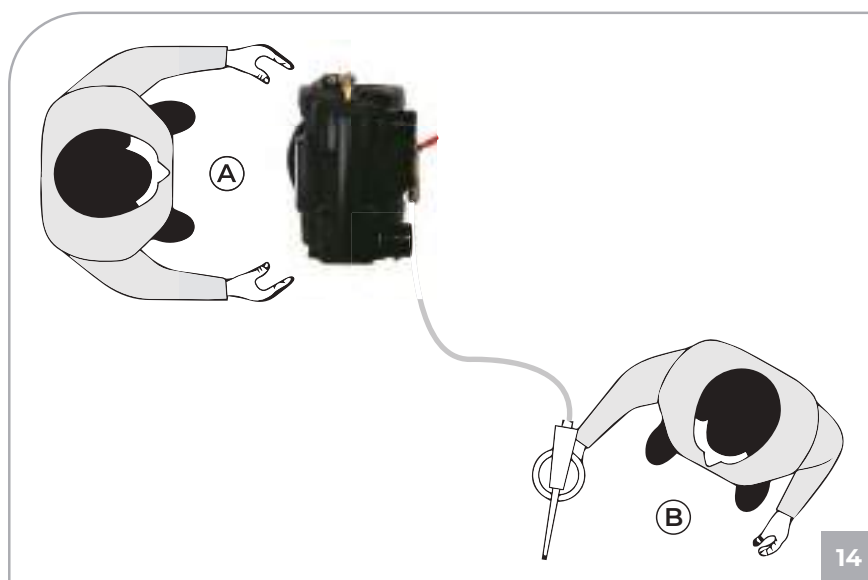
Although the Manufacturer has adopted all technical construction solutions in order to make the appliance as safe as possible, authorised operators please be aware that residual risks remain.

RESIDUAL RISK	Danger of burns upon accidental contact with the twin cylinder pump system and the electric motor.
SEVERITY OF DAMAGE	Mild damage (normally reversible).
LIABILITY	Liability may be incorporated in the instance when the operator decides to voluntarily carry out an incorrect or forbidden act.
PROBABILITY	Small and accidental.
PHASE IN WHICH THE RISK IS PRESENT	Operation.
SUITABLE PROVISIONS	Safety signs. Commitment to use personal protection equipment (PPI) and/or waiting for the appliance to cool.

AREAS ASSUMED BY AUTHORISED OPERATORS

AREA A (Fig. 14): on the front side of the appliance next to the control devices, in order to provide the activation and deactivation of the compressor, to carry out connection/disconnection of the tools, reading of the control panel and the regulation of the pressure, cleaning or replacement of the air filter and opening/closure of the condensate valve.

AREA B (Fig. 14): when working to carry out suitable operation dependent on the type of tool used (e.g.: painting, etc.).



PRE-START-UP CHECKS



BEFORE STARTING UP THE APPLIANCE, AUTHORISED OPERATORS MUST CARRY OUT THE FOLLOWING CHECKS.

- 1) Ensure that no unauthorised persons are in close proximity of the appliance.
- 2) Ensure that safety devices are not damaged and that they are correctly installed and operational.
- 3) Ensure that the appliance is correctly positioned.
- 4) Ensure that the “ON-OFF” switch is in the “OFF (0)” position.
- 5) Ensure that the condensate valve (**A - Fig. 15**) is closed.
- 6) Use the compulsory personal protection equipment (PPE).
- 7) Ensure that you have read and understood all parts of the present “Instruction Manual”.



APPLIANCE ACTIVATION



DANGER OF BURNS UPON ACCIDENTAL CONTACT WITH THE TWIN CYLINDER PUMP SYSTEM AND ELECTRIC MOTOR. WARNING – RESIDUAL RISK (SEE CHAP. “RESIDUAL RISKS”).

THE MANUFACTURER DECLINES ANY RESPONSIBILITY FOR DAMAGE TO PERSONS, ANIMALS OR OBJECTS CAUSED BY INOBSERVANCE OF REGULATIONS AND THE WARNINGS DESCRIBED IN THE PRESENT MANUAL.

THE MANUFACTURER DECLINES ANY RESPONSIBILITY FOR THE OUTCOME FOLLOWING USAGE AS THIS IS DEPENDENT ON THE TOOL USED AND THE PROFESSIONAL SKILLS OF THE AUTHORISED OPERATORS.

THE AUTHORISED OPERATORS MAY ONLY START UP THE APPLIANCE ONLY AFTER HAVING CARRIED OUT THE COMPULSORY CHECKS DESCRIBED IN CHAP. “PRE-START-UP CHECKS”.

BEFORE USING THE APPLIANCE IN QUESTION, AUTHORISED OPERATORS MUST READ AND UNDERSTAND ALL PARTS OF THE PRESENT MANUAL.

DURING OPERATION, PLEASE ENSURE THAT UNAUTHORISED PERSONS DO NOT COME WITHIN PROXIMITY OF THE APPLIANCE.

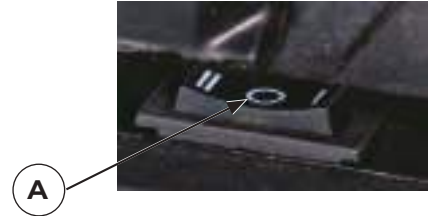
AUTHORISED OPERATORS MUST NOT LEAVE THE APPLIANCE UNSUPERVISED WHILST IN OPERATION OR DURING MAINTENANCE INTERVENTIONS.

ALARM CODES

In the instance where current overload and/or a short circuit of the appliance electrical system is noted, the thermal restore intervenes, disabling the electric motor.

To carry out the reset intervention, proceed as follows:

- 1) Turn the "ON-OFF" switch (**A - Fig. 16**) to the "OFF (0)" position.
- 2) Wait a few moments before restarting the appliance.
- 3) If the problem persists, contact the Service Department.



16



IF, AFTER CARRYING OUT THERMAL RESTORE, THE APPLIANCE DOES NOT RESTART, THE QUALIFIED OPERATOR MUST REQUEST THE INTERVENTION OF MAINTENANCE PERSONS AND/OR THE AUTHORISED SUPPLIER.

EMERGENCY STOP

Pressure value increase

Pressure value decrease



On/Off switch

Speed setting (high/low)

17

STANDARD MAINTENANCE

All activities carried out to ensure use and operation of the appliance, via various intervention types (regulation, valve checks, cleaning of air filters, etc.) executed by the authorised maintenance person according to pre-established time intervals.

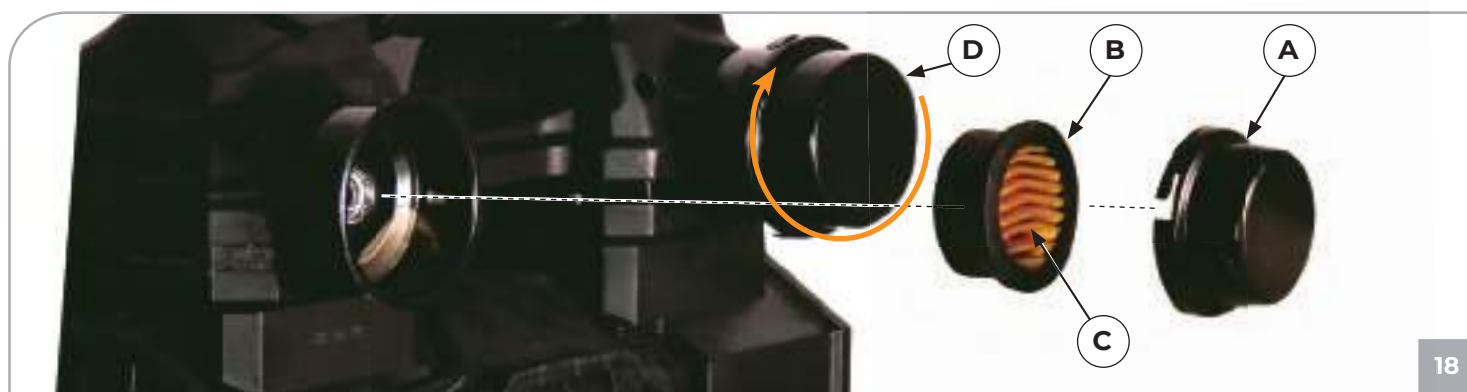


AUTHORISED OPERATORS MUST ONLY CARRY OUT OPERATIONS FOR WHICH THEY ARE QUALIFIED AND WITH THE CONSENT OF THE SAFETY MANAGER (WHERE THE APPLIANCE IS USED IN A BUSINESS CONTEXT).

IT IS FORBIDDEN FOR AUTHORISED OPERATORS TO LEAVE THE APPLIANCE UNSUPERVISED DURING OPERATION AND MAINTENANCE INTERVENTIONS.

STANDARD MAINTENANCE TABLE

FREQUENCY	INTERVENTION AREA	INTERVENTION TYPE
ONCE A DAY	Safety devices.	Ensure they are intact, correctly installed and functioning.
	Electrical cable and plug.	Visual check of usage status.
	Tank.	Upon termination of each work cycle, rest the appliance on the ground and drain the tank condensate valve opening the condensate valve.
EVERY WEEK	No. 2 air filters.	Remove the cover (A - Fig. 18). Remove the seal (B - Fig. 18). Extract the filters (C - Fig. 18) and clean them using compressed air. After re-insertion of the filters, correctly replace the cover (D - Fig. 18). N.B.: REPLACE THE FILTERS IF WORN.



EXTRAORDINARY MAINTENANCE

All activities carried out to ensure use and operation of the appliance, via various intervention types (regulation, valve checks, cleaning of air filters, etc.) executed by the Manufacturer's technicians according to preestablished time intervals and in the instance of faults or wear and tear.



IN THE INSTANCE OF EXTRAORDINARY MAINTENANCE, TECHNICAL ASSISTANCE PROVIDED BY THE MANUFACTURER OR THE AUTHORISED SUPPLIER MUST BE REQUESTED.

SPARE PARTS



IN THE INSTANCE OF EXTRAORDINARY MAINTENANCE, TECHNICAL ASSISTANCE PROVIDED BY THE MANUFACTURER OR THE AUTHORISED SUPPLIER MUST BE REQUESTED. USING UNORIGINAL SPARE PARTS IS FORBIDDEN.

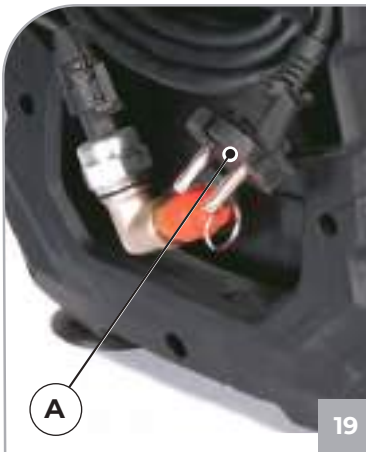
ANOMALIES - CAUSES - SOLUTIONS

The following table displays various scenarios which may occur when using the appliance.



AUTHORISED OPERATORS MUST ONLY CARRY OUT OPERATIONS FOR WHICH THEY ARE QUALIFIED AND WITH THE CONSENT OF THE SAFETY MANAGER (WHERE THE APPLIANCE IS USED IN A BUSINESS CONTEXT).

ANOMALIES	CAUSES	SOLUTIONS
The appliance will not start or it stops and will not re-start.	No electrical supply.	Check that the "ON-OFF" switch is in the "ON (I)" position. Check that the electrical plug (A - Fig. 19) is functioning correctly and is correctly plugged in. Check that any extensions used and the plug are functioning correctly. Check that the electrical main switch is functioning and in the "ON" position.
	Intervention of thermal reset owing to voltage overload and/or a short-circuit.	Carry out the procedure described in Paragraph "ALARM CODES".



END OF SERVICE LIFE

When disposing of the appliance, current legislation in force must be considered.
 Dispose of the various component materials separately (plastic, copper, iron, etc.).



IN THE INSTANCE OF EXTRAORDINARY MAINTENANCE, TECHNICAL ASSISTANCE PROVIDED BY THE MANUFACTURER OR THE AUTHORISED SUPPLIER MUST BE REQUESTED.

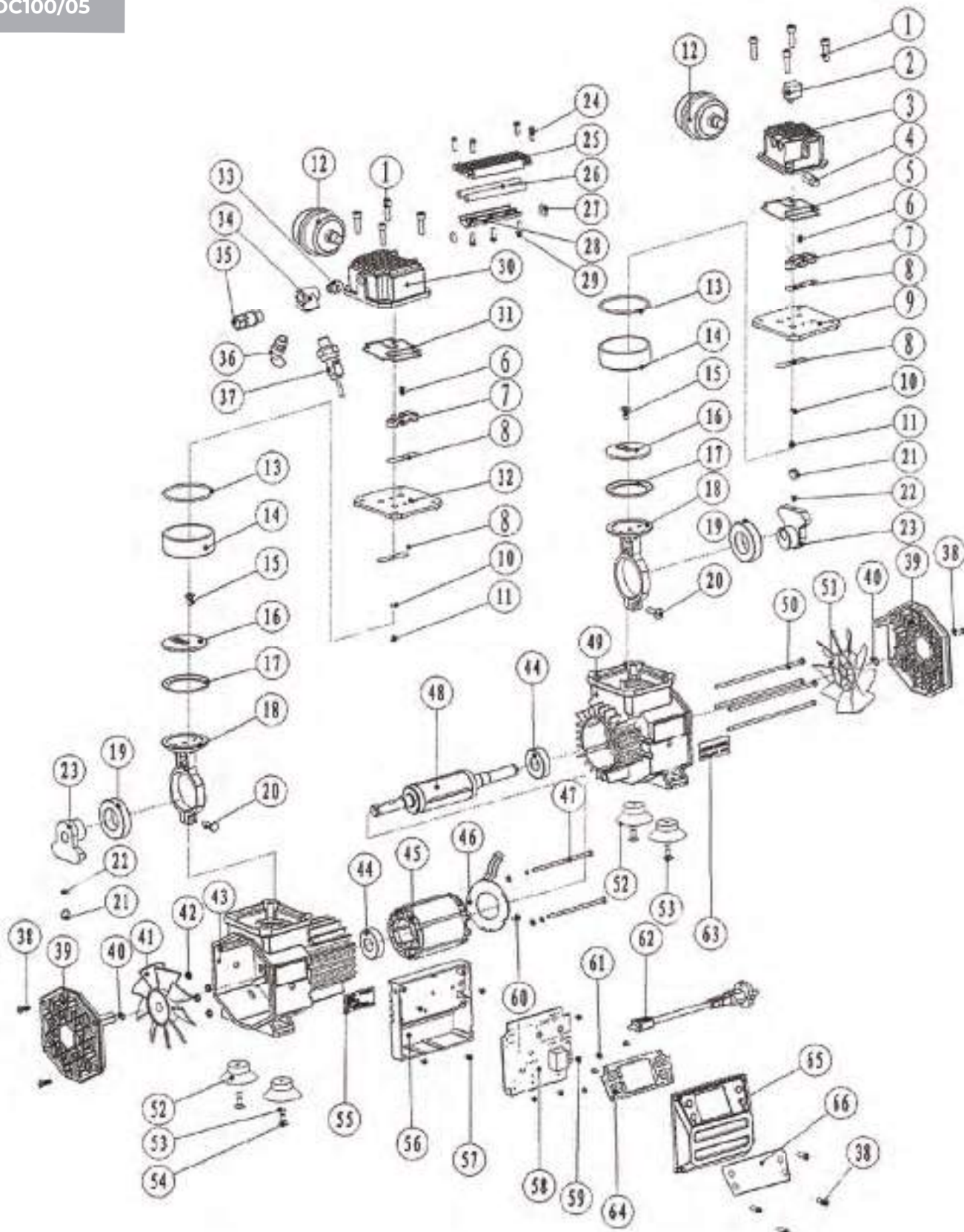
ANOMALIES	CAUSES	SOLUTIONS
The appliance restarts many times even without a tool.	Leakages of air.	Check that the pneumatic system is not damaged. Check that the air pipe and tools are intact as well as the connections.
The tool does not emit air.	The tank is not pressurised.	Switch on the appliance and wait until the tank fills checking the pressure of the relevant gauge.
	Incorrect regulation of the outlet pressure.	Check that the value displayed on the outlet pressure gauge (A - Fig. 20) is greater than 0 (zero) bar.
	The tool is damaged.	Check that the tool is intact and effective.
Fall of pressure in the air tank.	Leakages in the air pipe, tool or the pneumatic system.	Check that the pneumatic system is not damaged. Check that the air pipe and tool are not damaged. Check that the appliance-air pipe and air pipe-tool connections are correct. Check that the condensate valve (B - Fig. 21) is securely closed.
Safety valve intervention.	Pressure switch faulty.	Contact an authorised Supplier.
Air loss from the pressure switch when appliance is off.	Unclean or worn return valve.	Contact an authorised Supplier.
The appliance vibrates and/or emits a lot of noise.	Mechanical break.	Contact an authorised Supplier.
Frequent start-ups and low performance.	Dirty air filters.	Carry out filter cleaning (see Chap. "STANDARD MAINTENANCE").



SPARE PARTS

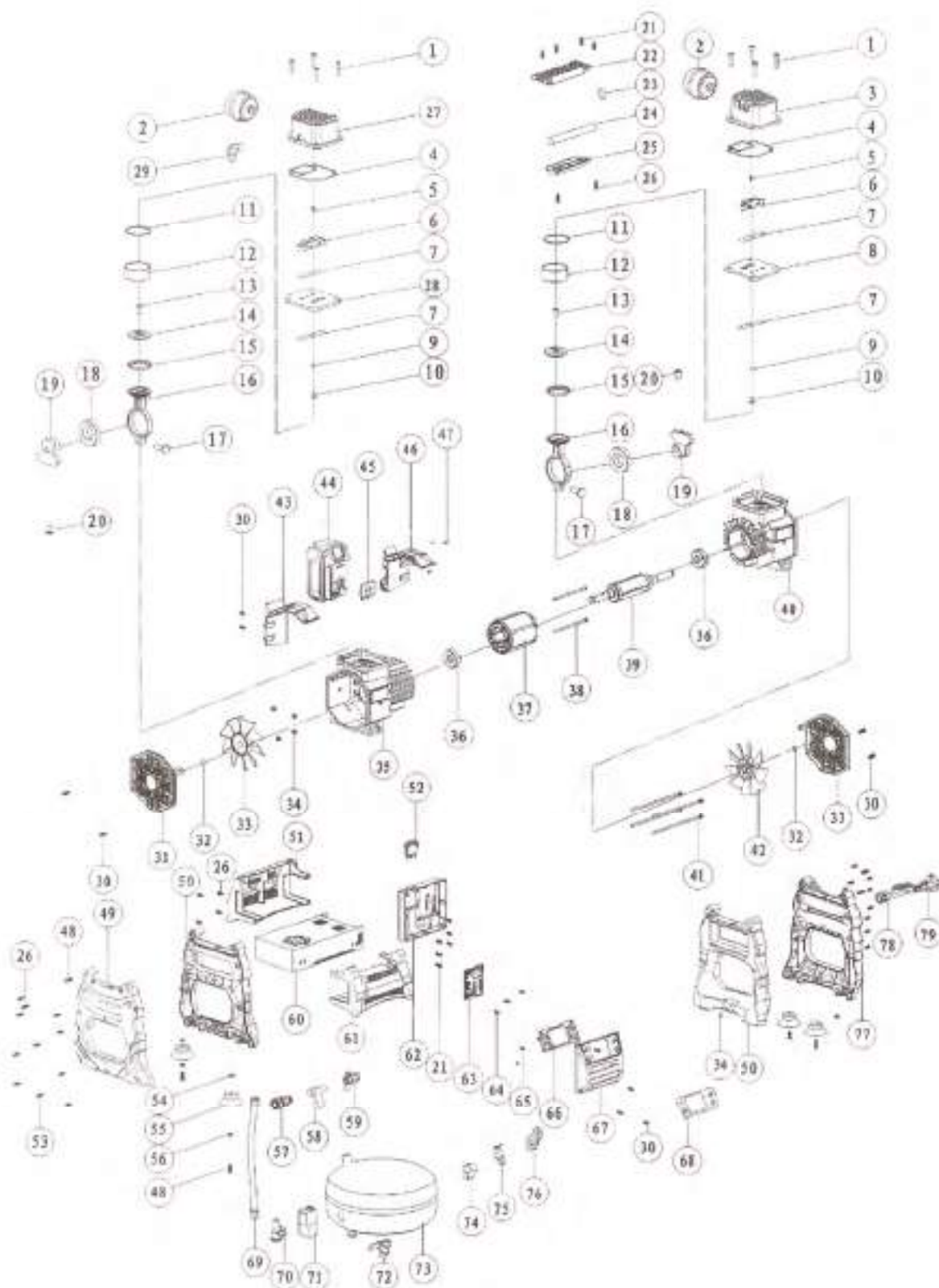
For repairs on the compressors, use only genuine replacement parts, identical to the replaced parts.
Repairs should be carried out only by authorized service center.

DC100/05



[illegible]

AC200/05



[illegible]



VIA DELLE TEZZE, 20/22
36070 TRISSINO (VI) - ITALY
phone +39 0445 96 20 00
info@gentilinair.com
www.gentilinair.com